

**PARISHES
OF
EASTVILLE MIDVILLE
NEW LEAKE**



**RESIDENT'S
INFORMATION 2021**

Eastville, Midville & New Leake Group Parish Council is made up of nine local people who have been elected, or co-opted, to represent local residents on the Parish Council.

At the time of printing your Parish Councillors are:

Cllr G Nunn (Chairman)	01205 270614
Cllr M Baker	01205 270161
Cllr C Dickinson	01754 820890
Cllr J Sweetman	01205 270046
Cllr S Thorold	01205 270277
	Mobile: 07771 642821
Cllr D Scott	07831 757283

There are currently three vacancies on the Parish Council, these will be filled by co-option. Please contact the Parish Clerk for information if you are interested in becoming a Parish Councillor

Eastville, Midville & New Leake Group Parish Council Meetings are held at 7.00pm in the Village Hall on the third Monday of each month except in January and in August, when circumstances allow. Currently the meetings are held remotely as per Government legislation. The dates for 2021 are:

15 February	Ordinary meeting with 15 minute public forum at 7.00pm
15 March	Ordinary meeting with 15 minute public forum at 7.00pm
19 April	Annual Parish Meeting – may be held remotely
17 May	Annual Parish Council Meeting where a vote takes place to elect a Chairman for the following year. This meeting is followed by an Ordinary Meeting with 15 minute public forum at 7.00pm
21 June	Ordinary meeting with 15 minute public forum at 7.00pm
19 July	Ordinary meeting with 15 minute public forum at 7.00pm
20 September	Ordinary meeting with 15 minute public forum at 7.00pm
18 October	Ordinary meeting with 15 minute public forum at 7.00pm
15 November	Ordinary meeting with 15 minute public forum at 7.00pm The draft Budget is discussed at this meeting
13 December	Ordinary meeting with 15 minute public forum at 7.00pm The budget is approved and the precept agreed at this meeting

(Information from the Lincolnshire Association of Local Councils):

BECOMING A PARISH COUNCILLOR

WHAT IS A PARISH COUNCIL?

To appreciate what is involved in being a local councillor, you need to know what a parish council is and what it can (and cannot) do.

A parish council is first and foremost, an elected local authority. It is the tier of local government which is closest to the people. It is not a voluntary organisation, a charity or anything to do with the Church.

WHAT CAN THEY DO?

As parish councils were created in law, they can only act within the law by exercising those duties and powers which are conferred on them by Statute (i.e. a wide range of Acts of Parliament). The powers local councils have are many and varied and include purchase of land and buildings, providing and maintaining village greens, provision of recreational and sporting facilities, street furniture, burial grounds and allotments, crime prevention measures, and traffic calming – to name just a few of the activities that can be carried out locally.

Parish councils have the right to be notified of, and to respond to, all planning applications submitted in their area, and can work in partnership with the District, Borough and County Councils on a whole range of benefits for the local community.

A parish council may raise money by various means to do its work, but usually its main source of funding is through a yearly levy (precept) on the council taxpayers in the parish.

WHAT IS THE ROLE OF THE PARISH COUNCILLOR?

The main thing is that you and your fellow councillors need to have an active interest and concern for your local community. You will represent local people and, if necessary, work in partnership with them and others. Collectively you will want to facilitate the provision of local services and amenities and take decisions which form the policy and governance of the council.

WHY ME?

As a new councillor, you may bring to the council new ideas, a care for your community and a willingness to learn. Initially you may have little knowledge of council work but this, together with experience and confidence, will follow. Training and guidance is available once you take a seat on the council.

Contact for the Parish Council is the Clerk:

Mrs E L Arnold

Crookes Cottage, Wrangle Bank, Boston, PE22 9DL

Tel: 01205 270352

Email: emnlgroupcc@aol.com

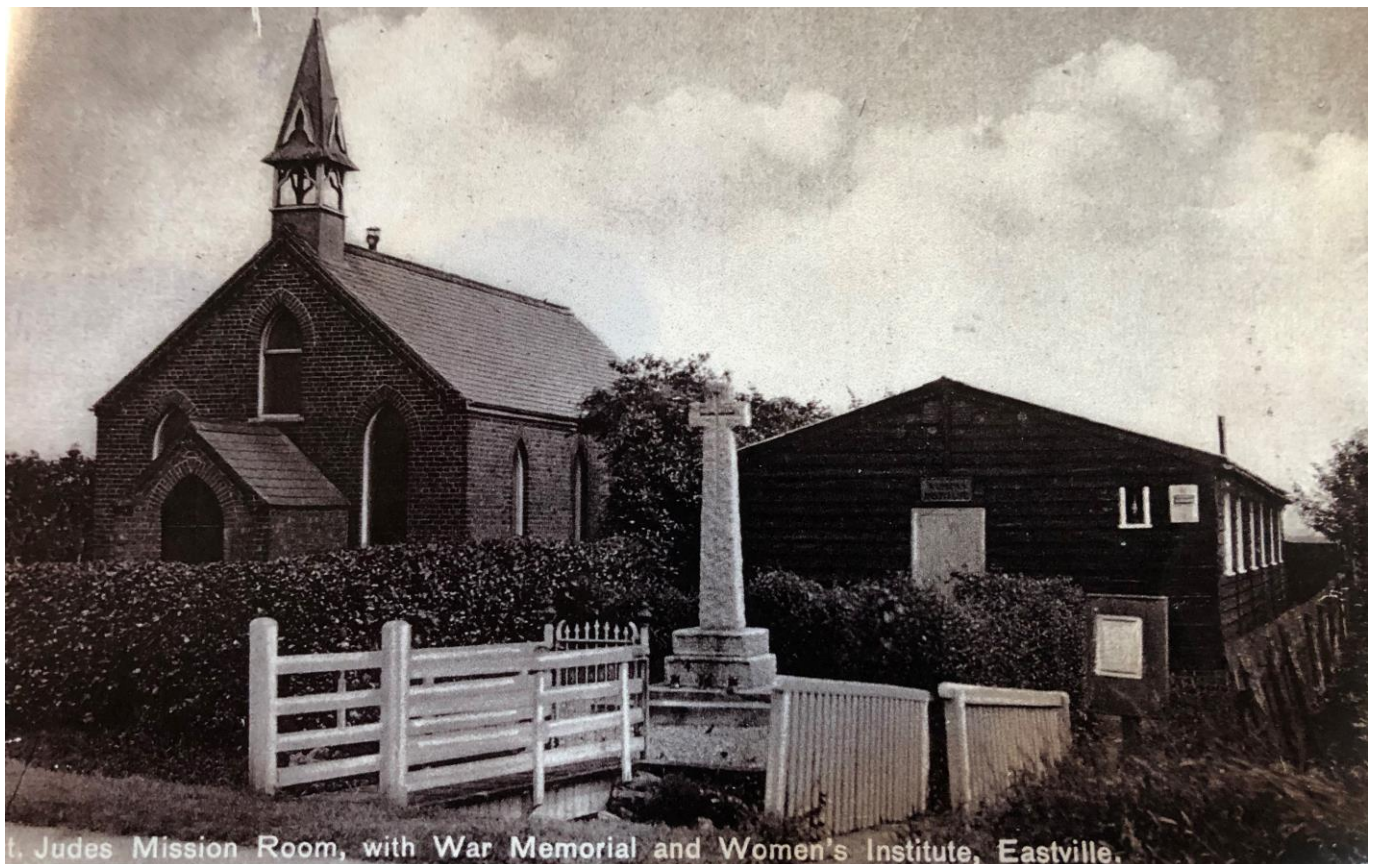
PARISH PLAN 2020 and 2021

Each year the Parish Council have £3,500.00 to give to local groups and organisations in the form of a grant.

Unfortunately, in April 2020 we were in lockdown, due to the covid 19 pandemic, so the Annual Parish Meeting could not take place. There had been two applications for the grant, but the vote could not take place.

As this booklet is being prepared we are in the third lockdown, due to the covid 19 pandemic, therefore it is not possible to make arrangements for an Annual Parish Meeting due to be held in April 2021 as Government guidelines for Parish Councils are that they should continue with remote meetings until May 2021.

With the above issues in mind the Parish Council have agreed that the grants for 2020 and 2021 should be put together for a Parish Council project at the Memorial Garden. The project has a starting figure of £7,000.00 and will be available to benefit the whole of the community.



St. Jude's Mission Room, with War Memorial and Women's Institute, Eastville.

Memorial Garden Project

The Eastville, Midville & New Leake Group Parish Councillors have taken the decision to 'tidy up' the Memorial Garden by the side of St Jude's church to the rear of the War Memorial. This will include clearing the area of the over-grown bushes, but leaving the benches in place. The benches will be repaired, if required, cleaned and re-sited in the same position as they are currently.

It is then intended to get a building sited at the rear of the area. The building is to have toilets, a kitchen area and a seating area. As this is to be in the Memorial Garden, an area on the outside of the building will be available for plaques, in memory of those no longer with us, to be placed. There will also be a new village notice board on the outside of the building.

More outdoor seating will be considered and easily maintained plants will be planted around the area.

The use of the building will be up to the community. It will be available for any new groups that may start up, for example a Knit and Natter group? With having toilet and kitchen facilities it will be available for use by the Church and by the school when the children visit the Church.

Other ideas for the building are a community shop and a coffee shop. In order to get this off the ground volunteers will be needed to help with a shop.

If anyone is willing to help out with any part of this project please let the Clerk know, or if you have any other ideas that could be considered they would be gratefully received too.

(Tel: 01205 270352 or email: emnlgroupcc@aol.com)

ST. JUDE'S CHURCH, NEW LEAKE

The Church of St Jude is now the only open Church in the Parish of Eastville with Midville & New Leake and is also part of a bigger cluster of Churches with St Luke's, Stickney and St Helen's, Stickford, within the Deanery of Bolingbroke. The Church building is modest, having been set up as a mission Church from Eastville and Midville. Unlike most of our heritage churches, it is not a listed building and does not, therefore, attract much grant funding. We really do have to do it ourselves!

Over the past 12 months we have been unable to meet together as we would have wished. However, when Churches were able to be open, we made the decision to move our opening days from Sunday to Tuesday and we set up a weekly Bible Study on a Tuesday afternoon. We were hoping to develop these into 2021, but sadly we have had to shut them again – but we will return! - We are currently having services in New Leake on the 5th Sunday of any month, but it remains to be seen what will happen when we are able to reset our rotas and return to something like normal.

We are a small church with a big heart for the community and we are looking to develop our relationship with the Parish Council as they also seek to enhance services for the village.

You will find details of our worship services on our Facebook page – **The Stickney Cluster of Churches** – so check us out. If you would like further information, please ring me on 01205 481183 and I will try to help.

Rev Fran Jeffries



EASTVILLE MIDVILLE AND NEW LEAKE VILLAGE HALL

The Village Hall is located on Station Road New Leake PE22 8LS

The past year has been difficult for all of us, we look forward to being able to welcome you back to our events once we are permitted to reopen.

Some of the events we are planning -

A new Auction on the fourth Saturday of the month.

Regular Prize Bingo

Monthly Coffee Mornings

Plus anything else we can manage to organise once it's safe to do so.

A quick overview of our facility -

A (30M x 10M) Main Hall, separate room with a bar area, large fully equipped kitchen, Ladies and Gents toilets plus an individual disabled toilet with a baby changing unit. There is also a good sized adjacent car park which backs on to the village playing field.



The Main Hall has a seating capacity of 150 including tables, another 20 or more can be comfortably seated in the bar room.

The Main Hall also benefits from a full height ceiling enabling the use of larger bouncy castles and assault courses without problem.

Hire is by the hour, for just the bar (ideal for small groups and meetings), the main hall or the whole facility, the kitchen has a one off usage charge (per hire).

**Hire rates start from only
£5.50 per hour.**

**All charges are fully inclusive
of electricity and heating
there are no hidden extras.**



**Enquire about our special
Weekend Wedding Package for
only £180, with inclusive use of
the whole facility including the
kitchen from Friday 19:00 until
noon on Sunday.**

Chairperson: Donna Grooby 01205 270478

Secretary/Booking Clerk: Glyn Nunn 07891 739992

Email: emnlvillagehall@gmail.com

Facebook: search for emnlvillagehall



Eastville, Midville & New Leake Playing Field

Charity number 701534

Happy New Year to everyone.

Well, what a challenge the last year was! Unfortunately, we were obliged to delay installing the new seating because of lockdown rules but this will be done as soon as possible.

Progress has been made with the woodland paths so that this wild area can be enjoyed without disturbance to the natural environment or damage to the newly planted wildflowers. We hope they will give us their first display soon, which should improve over the years.

A grant has been received from Triton Knoll for some refurbishment, which includes the resurfacing at the roundabout.

We believe that the playing field proved to be a valuable asset during the lockdowns, and continues to be so, despite restrictions. It is a good place for families to take a walk and be safely outdoors, with plenty of room for social distancing.

We hope to hold a 'Family Fun Day' in the summer, and a Christmas event in December when children can once again meet Santa and take part in various activities while adults enjoy our delicious food and chat. We hope these events will be well supported to help raise the funds we need to maintain the playing field for everyone's enjoyment & well-being.

Sadly, we have recently lost a dedicated Committee member, Trisha Noble. Her sunny presence and hard-working, generous spirit will be sorely missed.



Committee

Lauren Cassidy

Andie Bland

Lynne Collingwood

Michele Baker

Zoe Thorold

There have been a few comments about dogs at the playing field, but the field provides an excellent place for dog walking and we want to keep it that way, therefore we ask that all owners keep their dogs on the lead near the play area and also in the woodland area, and please don't allow them to dig anywhere! We are going to provide a third bin to be sited near the new seating, this will make clearing up even easier.

If you can volunteer time and energy, have any ideas for raising funds or would simply like to make a donation we would love to hear from you.

If you shop online at Amazon try using Amazon Smile:

<https://smile.amazon.co/ch/701534-0> this makes no difference to you, but a donation will be given by Amazon to the Playing Field Committee.

For other online purchases, through Easy Funding via:

<https://www.easyfunding.org.uk/causes/eastvillemidvillenewleakeplayingfieldcommittee/> again, at no added cost to you a donation will be given to the Playing Field Committee.

Contact Michele: Telephone: 01205 270161
email: emnl.playingfield@gmail.com
or find us on Facebook

In order to help the EMNL Playing Field Committee the Parish Council have agreed to take on the grass cutting at the playing field. The decision was made due to the field being accessible for all parishioners to use in various different ways. Children can run around, use the play equipment, which is for various ages and abilities or just meet up to hang out with friends. Adults can use the area for walks, use the outdoor gym equipment or to meet up with their friends too. There is also a football pitch with goals if anyone wants any practice!

MARKET DAY BUS SERVICE

This bus service is available every Wednesday and runs from Toynton All Saints to Boston, leaving Toynton All Saints at 9.55am and picks up along Spilsby Road from 10.00am. The pick-up points are anywhere along the route 'by request' – just put out your hand when you see the Phil Haines coach, looking like a school bus sometimes, approaching!

The bus goes along Fodderdyke Bank to Small End, Friskney, on to Lade Bank, Bull Drove and Wrangle Bank, and finally picks up at Old Leake Commonside - a real rural bus service! The arrival time in Boston is around 10.45am.

The service leaves Boston for the return journey at 1.15pm, the drop off time for New Leake and Eastville will be from 1.55pm. (Cars could be left in the Village Hall Car Park if you want to give the bus a try.) The cost for a **return journey** is currently **£6.00** if you do not have a bus pass.

From your County Councillor:

2021 is finally here, 2020 was a long tough year for everyone, especially those living alone and being isolated for most of the year, and unfortunately 2021 has found us all in the same position, the message of staying at home and keeping safe must be followed.

The COVID vaccine is being given across Lincolnshire and for the New Leake, Eastville and Midville area it will be given at Spilsby Franklin Hall. Anyone who is not able to attend need not worry as home visits will be available with the new vaccines, but it will take a little longer. Every adult will be offered the vaccine during 2021 and hopefully as many as possible will take up the offer.

If anyone is struggling to seek help the numbers to contact are below together with my phone number - I am on hand 24/7 and will endeavour to sort out any issues.

Please remember to call 111 if you have an urgent medical problem, they will offer you advice on where to get treated safely and effectively, not forgetting if it is life threatening then dial 999.

As you will all know, and see, there has been a further bank collapse on Fodderdyke Bank which, hopefully, will not cause too much inconvenience when being repaired, I have been assured the repair will start as soon as possible.

Further road repairs are planned for the fourth phase of the plan for Fodderdyke Bank, as soon as dates are made available I will inform the Parish Council Clerk and put the information on social media.

Children who have paid for school transport will be offered a 40% refund.

Test and trace support payments are still available to support you and your family if you have to isolate.

Please everyone stay safe and hopefully soon life will become a little more normal again but in the meantime please remember wash your hands wear a face mask and keep a safe distance apart.

Cllr Wendy Bowkett

County Councillor for Wainfleet and Spilsby Ward

Tel: **07930 254723** or email: cllrw.bowkett@lincolnshire.gov.uk

From your District Councillor:

Knowing who to contact about a Council service can sometimes be a challenge. ELDC have put together a useful list to advise which level of Council is responsible for which service. I hope you find this useful:

<https://www.e-lindsey.gov.uk/article/6102/Council-Service-Responsibility->

For those that do not have access to the internet, here are just a few of the responsibilities East Lindsey District Council have: Planning, Licensing, Environmental Health, Local Markets, Housing Advice, Homelessness Support & Prevention, Council Tax Collection, Business Rates Collection, Private Sector Housing Enforcement, Refuse, Recycling & Green Waste Collection, Environmental Permits, Footway Lighting, Street Naming & Numbering, Car Parks, Litter Bins, Elections, Building Regulations & Enforcement, Air Quality Monitoring and Maintain Tree Protection Order Register - just a few of the many responsibilities ELDC have.

ELDC also have Facebook page which advises residents of the latest news regarding the Council. It also gives links to District Council consultations throughout the year such as the Council Tax Support Scheme, Annual Budget and Customer Feedback. It's useful to follow the page to keep up to date with what is happening locally.

<https://www.facebook.com/eastlindseydistrictcouncil/>

Confused about what you should put in which ELDC bin?

Here's a link to help. <https://www.e-lindsey.gov.uk/whatbin>

As always, I am happy to help residents with District Council related issues. However I cannot, and neither can any other elected body, expedite any applications made to the Council for planning or licensing of any kind. I can only suggest you apply for these in a timely manner to ensure they are received in plenty of time for when they are needed.

Email: carleen.dickinson@e-lindsey.gov.uk or phone 01754 820890

Thank you

District Councillor Carleen Dickinson
Friskney Ward

The Stickney & New Leake Primary Schools Federation



**New Leake Primary &
Nursery School**

**Learn, Enjoy,
Achieve!**

**Executive
Headteacher
Mrs. R Thompson**



**Stickney Primary &
Nursery School**

**Is your child aged 4 before 31st August 2021?
Are you looking for a good school?
Is your child 2-4 years old, are you looking for a good Nursery?**

Initial online applications for Reception Admissions for September 2021 will re-open from 17th April – 17th May 2021 for late applications at <https://www.lincolnshire.gov.uk/school-admissions>

If you have any questions or if you would like to register your interest in a place directly, please feel free to contact either school and we will always be happy to help.

You can apply for Nursery places directly with the school throughout the year.

More information can be found on our websites at www.new-leake.lincs.sch.uk or www.stickneyprimary.co.uk

**We would love to hear from you and as soon as guidance allows we look forward to welcoming you to a tour of our schools.
In the meantime, we can offer virtual viewing.**

**For further details, please contact school at
Stickney 01205 480254 or enquiries@stickney-pri.lincs.sch.uk
New Leake 01205 270285 or enquiries@new-leake.lincs.sch.uk**

Our Stickney school is situated on the A16 between Spilsby and Boston and our New Leake school is nearby situated on the road that links the A16 at Stickney with the A52 at Friskney **we can provide across both schools...**

- Quality education with experienced teachers & support staff
- 15 hour and 30 hour funded places for 3 & 4 year olds (from age 2 at Stickney)
- At Stickney**
- Small classes in spacious, bright classrooms
- Large attractive grounds with a nature area, growing area and peace garden
- Breakfast club and after school child care provision available on site until 5.45 pm
- Excellent Early Years provision with dedicated EYFS teacher from the age of two
- At New Leake**
- Children taught in small groups according to age and aptitude
- Large outdoor play area with spacious school field, wildlife & sensory garden
- Breakfast club
- Purpose built Early Years/Reception Classroom

Please contact us on either of the above numbers to arrange a suitable time to discuss your requirements. We look forward to meeting you as soon as circumstances allow.

(At the time of placing this advert we are in a National Lockdown, but as restrictions ease and change we are hoping to be able to arrange for you to visit our schools).

LINCOLNSHIRE COUNTY COUNCIL HIGHWAYS:

Highway faults and repairs should be reported at:

www.lincolnshire.gov.uk/faultreporting

via the

fixmystreet app on your mobile phone

or via the website at:

www.fixmystreet.com

(Fix my street report all repairs and faults to the relevant authority for repairs to be carried out)

Information regarding current roadworks is available in map form at:

<https://roadworks.org/>

Some useful phone numbers, just in case:

Flooding Issues:	01522 782082
Dangerous issues – police:	101
Fallen tree on the road or footpath	01522 782070
Power cut/damaged power lines	105

COFFEE MORNINGS

First Friday of each month (except in January) at
Eastville, Midville & New Leake Village Hall

10.00am - 12 noon

Homemade cake and coffee/tea

Only £1.50



Hopefully these coffee mornings will be able to safely start again in 2021 - check the village notice boards for details

WITHAM FOURTH DISTRICT IDB

It is fair to say that, so far the winter of 2020/21 has been kinder to us than 2019/20. The total annual rainfall in 2020 for the Witham Fourth District was approximately 600mm, some 240mm less than 2019 where we recorded 840mm for the year. None the less by Christmas the ground in the District was completely saturated and with this the risk of slips occurring always increases. Some residents may be aware of the recent slip on the Fodderdyke which will, unfortunately, require the road to be closed for the duration of the work which will be completed through January and February 2021.

2020 has been a busy year, the Boards operations Team have flail mown over one million metres of watercourse banks and cleared the vegetation from the channel of over half a million metres of watercourse. In addition, there has also been the programme of slip repairs, bushing, culverting and mudding works delivered as well.

Pumping Station Teams have also been busy maintaining and repairing engines, pumps and equipment at the Boards nine pumping stations.

Our website contains lots of useful information and contact numbers should local residents want to learn more about the Board and the work that we do (www.w4idb.co.uk)

Peter Bateson
Chief Executive



EDUCATIONAL GRANTS

available from the

ALENSON & ERSKINE FOUNDATION

Charity Nos: 217635 & 527671

For school leavers living in:

Old Leake, New Leake or Wrangle

**For grants in connection with
further/higher education, profession or trade
(NOT 'A' Levels)**

Application Forms available from the Clerk:

Mrs E L Arnold, Crookes Cottage, Wrangle Bank, Boston, PE22 9DL

Telephone: **01205 270352** or e-mail: wranglepc@aol.com

Application forms available from August until the **end of September**

LEAKE UNITED CHARITIES

The above charity provides a small amount of financial assistance to residents who live in Old Leake, New Leake, Eastville and Midville.

Residents eligible for this support must be over 65 years of age, be retired and lived in the village for 5 years. The payments are made in December each year.

New applicants need to apply for an application form at the beginning of September as the closings date is by the 31 October 2021.

For an application form please contact the Clerk:

**Mrs N Evison
52 School Lane
Old Leake
Boston
Lincolnshire
PE22 9NJ**

Telephone: 01205 870214



Defibrillator

Have you noticed the defibrillator sited on the wall, by the big gates, at the Grant's office in Spilsby Road? This has been provided by the Parish Council and, when meetings are allowed, there will be training available for twelve people on how to the use of a defibrillator. The training will be provided by LIVES free of charge.

If you are interested in taking part in the training session, please advise the Clerk to the Parish Council who will advise you when the training has been booked.

The defibrillator gives instructions to anyone who is using it – you cannot get it wrong as it will not let you! If the 'pads' are not positioned in the correct place it will not 'shock'. The 'shock' will only happen when everything is in the right place.

TO USE: DIAL 999 and you will be given a code for access to the defibrillator.

Please do not hesitate to use the defibrillator if required, it is there to help save lives.

(There is also a defibrillator on the wall of the Duke of Wellington)

SPILSBY

NEIGHBOURHOOD POLICING TEAM

Non-emergency number: 101

www.lincs.police.uk

Twitter @SpilsbyPolice

SPILSBY POLICE STATION

Eresby Avenue, Spilsby,
Lincolnshire PE23 5HU



NOT TO BE TAKEN AS PROOF OF IDENTITY